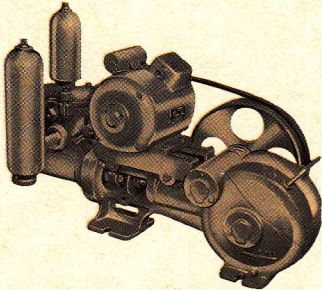
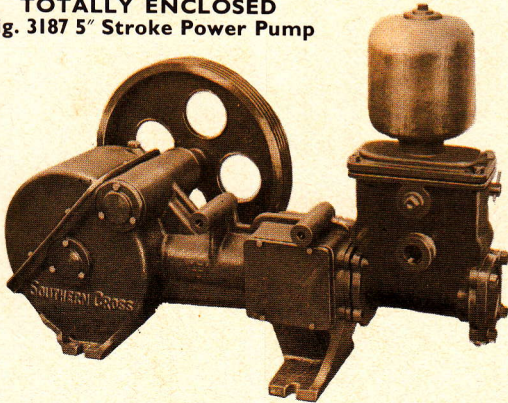


**TOTALLY ENCLOSED**  
1½" Bore × 1¾" Stroke Power Pump

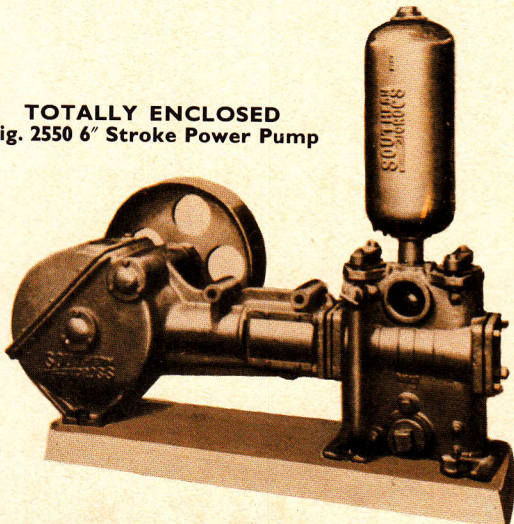
**TOTALLY ENCLOSED**  
2½" Bore × 3" Stroke Power Pump



**TOTALLY ENCLOSED**  
Fig. 3187 5" Stroke Power Pump



**TOTALLY ENCLOSED**  
Fig. 2550 6" Stroke Power Pump



**POWER PUMPS—SINGLE CYLINDER  
—DOUBLE ACTING—TOTALLY  
ENCLOSED—SELF OILING.**

Whenever you decide a pump is needed, consider the advantages of a SOUTHERN CROSS Power Pump—because of its versatility and its capacity to deliver a constant supply against widely varying heads. Generally a Power Pump is used to pump from surface supplies such as creeks, dams, earth tanks, etc., and can be used as a primary unit or as an auxiliary to your SOUTHERN CROSS Windmill Plant during periods when there is no wind. It is particularly suitable for pumping over long distances.

**AIR CHAMBER:** All pumps are supplied as standard with an air chamber on the discharge side of the pump, and this evens out the flow of water through the pipe lines and prevents shock loads, particularly when pumping through long distance lines.

**SUCTION CHAMBER:** 1½" × 1¾", 1¾" × 1¾" and 2½" × 3" pumps are fitted as standard with a suction chamber. For other sizes the suction chamber is extra, but it is recommended one be always used. This suction chamber maintains a reservoir of water in the pump when stopped and ensures a positive pumping action when restarted. It also evens out the flow of water on the suction side, preventing water hammer. All suction chambers are of the self-priming type. (Refer page 18).

**WATER BY-PASS:** The 5" and 6" stroke power pumps are fitted with a water by-pass which enables the engine to be relieved of most of the load when starting. The by-pass is opened before the unit is started up, which allows some of the water to be by-passed from the discharge back into the suction. The by-pass is closed when the engine has attained its correct speed.

**ELECTRIC MOTOR MOUNTING:** All pumps have provision for electric motor mounting, which can be supplied at an extra price.

**PULLEYS:** Pulleys are supplied as standard on 1½" × 1¾", 1¾" × 1¾" and 2½" × 3" pumps, but are extra on the other sizes.

**WEIGHTS AND PULLEY SIZES**

Pump Size	Pump Weight lbs kg	Flat Pulley		Vee Pulley	
		Size	Weight	Size	Weight
1½" × 1¾"	60 27	13½" × 1" face 13½" × 1" face 12" × 2½" face	Supplied as standard with pump	No Vee Pulley needed. Vee belts can drive straight on to pulley.	
1¾" × 1¾"	60 27				
2½" × 3"	205 93				
2½" × 5"	499 226	21½" × 4" face	48 lb. (22 kg.)	21½" × 4A or 21½" × 6B	61 lb. (28 kg.) 95 lb. (43 kg.)
3" × 5"	504 229				
3½" × 5"	504 229				
4" × 5"	504 229				
5" × 5"	499 226				
4" × 6"	896 406	23" × 6" face	92 lb. (42 kg.)	21½" × 6B or 28⅜" × 5C	95 lb. (43 kg.) 269 lb. (122 kg.)
5" × 6"	924 419				
6" × 6"	924 419				



Pump	PRICE		Pump	PRICE	
	Capital Cities, Toowoomba, Rockhampton, Townsville			Capital Cities Toowoomba, Rockhampton, Townsville	
<b>1 3/4" STROKE POWER PUMPS—Totally Enclosed</b>					
1 1/2" x 1 3/4" Pump with suction and air chamber (not including pulley, pump pedestal base, and electric motor base)		<b>\$60.00</b>	<b>Fig. 3187 5" STROKE POWER PUMPS (Cont.)</b>		
1 3/4" x 1 3/4" Pump with suction and air chamber (not including pulley, pump pedestal base, and electric motor base)		<b>70.00</b>	3 1/2" x 5" with air chamber		<b>\$515.00</b>
Electric Motor Base (1 1/2" x 1 3/4" and 1 3/4" x 1 3/4" pumps)		<b>2.60</b>	4" x 5" with air chamber		<b>\$35.00</b>
Pump Pedestal Base (1 1/2" x 1 3/4" and 1 3/4" x 1 3/4" pumps)		<b>2.60</b>	5" x 5" with air chamber		<b>\$80.00</b>
Pulley 13 1/2" dia. x 1" Face (1 1/2" x 1 3/4" and 1 3/4" x 1 3/4" Pumps)		<b>5.50</b>	2 1/2" x 4" Face Pulley		<b>46.50</b>
<b>Fig. 3215 3' STROKE POWER PUMPS—Totally Enclosed</b>					
2 1/2" x 3" Pump with suction and air chambers and flat pulley		<b>305.00</b>	2 1/2" P/D x 4 "A" Pulley		<b>\$6.50</b>
Electric Motor Mounting Rails		<b>18.80</b>	2 1/2" P/D x 6 "B" Pulley		<b>\$90.00</b>
<b>Fig. 3187 5" STROKE POWER PUMPS—Totally Enclosed</b>					
2 1/2" x 5" with air chamber		<b>460.00</b>	Electric Motor Mounting Rails		<b>10.70</b>
3" x 5" with air chamber		<b>480.00</b>	Suction Chamber and fittings KM-D (2 1/2" x 5", 3" x 5", 3 1/2" x 5" and 4" x 5" pumps)		<b>29.40</b>
<b>Fig. 2550 6" STROKE POWER PUMPS—Totally Enclosed</b>					
4" x 6" with air chamber <b>\$919.00</b>					
5" x 6" with air chamber <b>\$97.00</b>					
6" x 6" with air chamber <b>1,039.00</b>					
23" Dia. x 6" Face Pulley <b>70.90</b>					
2 1/2" P/D x 6 "B" Pulley <b>90.00</b>					
2 3/8" P/D x 5 "C" Pulley <b>124.00</b>					
Electric Motor Mounting Rails <b>10.70</b>					
Suction Chamber and fittings KM-E (all pumps) <b>67.50</b>					

## PUMPING TABLE FOR TOTALLY ENCLOSED POWER PUMPS

Pump Mark	Pump		Screwed		Strokes per Minute	Pump Pulley R.P.M.	Gallons per Hour	H.P. Required at Pump Pulley for Heads of:				
	Bore	Stroke	Suction	Discharge				50 ft.	100 ft.	150 ft.	200 ft.	250 ft.
—	1 1/2"	1 3/4"	1"	3/4"	—	230	290	1/4	1/2	3/4	—	—
—	1 3/4"	1 3/4"	1"	3/4"	—	210	400	—	—	—	—	—
Fig. 3215	2 1/2"	3"	1 1/4"	1 1/4"	50	250	300	1/3	1/3	1/2	3/4	3/4
					70	350	425	1/3	1/3	1/2	3/4	1
					90	450	550	1/3	1/3	1/2	3/4	1 1/4
					110	550	670	1/3	1/3	1/2	3/4	1 1/2
<b>FIG. 3187 UNITS</b>								150 ft.	225 ft.	300 ft.	400 ft.	500 ft.
KH-E	2 1/2"	5"	1 1/4"	1 1/4"	50	260	500	.7	1.0	1.3	1.7	2.1
					70	365	710	.9	1.4	1.8	2.4	3.1
					80	420	820	1.0	1.6	2.1	2.7	3.5
KH-F	3"	5"	1 1/2"	1 1/2"	45	236	660	.8	1.4	1.8	2.3	3.1
					60	315	890	1.1	1.7	2.2	2.9	3.7
					75	404	1120	1.4	2.0	2.6	3.5	4.3
KH-G	3 1/2"	5"	2"	2"	50	260	1010	1.3	1.9	2.5	3.4	4.2
					60	315	1220	1.5	2.3	3.1	4.0	5.1
					70	370	1425	1.7	2.4	3.7	4.6	6.0
KH-H	4"	5"	2"	2"	50	260	1330	1.7	2.5	3.4	4.5	—
					60	315	1600	2.0	3.0	4.0	5.3	—
					70	370	1865	2.3	3.5	4.6	6.1	—
KH-J	5"	5"	2 1/2"	2 1/2"	50	260	2100	2.7	4.0	5.3	—	—
					60	315	2625	3.2	4.8	6.3	—	—
					70	370	2940	3.7	5.6	7.3	—	—
<b>FIG. 2550 UNITS</b>												
AN-I	4"	6"	2 1/2"	2 1/2"	40	245	1280	1.6	2.4	3.1	4.2	5.2
					50	305	1600	2.0	3.0	3.9	5.2	6.5
					60	365	1915	2.4	3.6	4.7	6.3	7.8
AN-K	5"	6"	3"	3"	40	245	2015	2.5	3.8	5.0	6.7	—
					50	305	2520	3.2	4.7	6.3	8.4	—
					60	365	3025	3.8	5.6	7.5	10.0	—
AN-L	6"	6"	4"	4"	40	245	2900	3.7	5.5	7.3	—	—
					50	305	3630	4.6	6.8	9.1	—	—
					60	365	4355	5.5	8.2	10.9	—	—